



The Open Cardiovascular Medicine Journal

Content list available at: <https://opencardiovascularmedicinejournal.com>



RESEARCH ARTICLE

Five-Year Outcomes of Heart Failure with Preserved Ejection Fraction

Cristina Macía-Rodríguez^{1*}, Emilio Páez-Guillán², Vanesa Alende-Castro³, Alba García-Villafranca¹, Lara Maria Mateo-Mosquera², Lucía Martínez-Braña⁴, María de los Ángeles Valcárcel García⁵ and Francisco Luis Lado Lado²

¹Department of Internal Medicine, POVISA Hospital, Rúa Salamanca 5, Vigo, Pontevedra, Spain

²Department of Internal Medicine, Complejo Hospitalario Universitario de Santiago de Compostela, Travesía da Choupana s/n, Santiago de Compostela, A Coruña, Spain

³Department of Internal Medicine, Hospital do Salnés, Rúa Hospital do Salnes, 30, 36619 Vilagarcía de Arousa, Pontevedra, Spain

⁴Department of Internal Medicine, Barbanza Hospital, Lugar Salmón s/n, Ribeira, A Coruña, Spain

⁵Department of Internal Medicine, Costa Hospital, Rafael Vior s/n, Burela, Lugo, Spain

Abstract:

Objective:

The aim of this study was to describe the clinical characteristics of patients that have had a heart failure with preserved ejection fraction (HF-pEF) and to identify the factors associated with 5-year mortality and readmission.

Methods:

A prospective cohort study was conducted of patients followed by the Heart Failure Unit of the Internal Medicine Department. Clinical characteristics and outcomes were collected. Univariate and multivariate analyses were performed in order to identify factors associated with 5-year mortality and readmission.

Results:

A total of 209 patients with HF-pEF were followed, 59.3% of these were women, with a mean age 79 years. The main etiology was hypertensive heart disease and a high level of comorbidity (chronic renal failure, hypertension and atrial fibrillation) was observed. The 5-year mortality was 55.5%; the related variables were anemia (hazard ratio [HR]=1.7; 95% confidence interval [CI]: 1.2-2.5), in patients being treated with statins (HR=0.7; 95%CI 0.5-0.9) and spironolactone (HR= 1.6; 95% CI: 1.1-2.3); 24.5% of patients had >2 admission in 5 years, with the main related factors being atrial fibrillation (HR=2.7; 95%CI: 1.4-5.5), anemia (HR=1.9; 95%CI:1.0-3.3) and were being treated with spironolactone (HR=2.1; 95%CI:1.2-3.7).

Conclusion:

Patients with HF-pEF are old and present a high level of comorbidity. Furthermore, they have a high 5-year mortality and readmission rate. The only factor associated with lower mortality was the treatment with statins. The use of spironolactone was associated with a higher mortality risk.

Keywords: Heart failure, Diastolic heart failure, Preserved ejection fraction, Prognosis, mortality, Hospital readmission.

Article History

Received: January 14, 2020

Revised: May 10, 2020

Accepted: May 28, 2020

1. INTRODUCTION

Heart failure (HF) with preserved systolic function (HF-pEF) affects, on average, half of the patients with HF [1]. Its prevalence is increasing [2], which, in turn, represents an important increase in mortality, hospital admissions, and health costs [3]. Epidemiological characteristics of patients presenting

with HF-pEF are different from those presented by the total number of patients with HF: they are older, with a greater proportion of women and obese people [4, 5].

However, the underlying physiopathological mechanism of HF-pEF is not clearly determined yet: while previously, a diastolic dysfunction of the left ventricle was suspected to be the cause, nowadays, new hypotheses are suggested, such as immunological alterations or the presence of a pro-inflammatory environment [6].

* Address correspondence to this author at the Department of Internal Medicine, POVISA Hospital, Rúa Salamanca, 5, Vigo, Pontevedra, Spain 32611; Tel: 0034639830796; E-mail: cristina.macia.rodriguez@gmail.com

Although the same drugs used for HF with depressed function have been used, only a few studies have shown benefits derived from their use [7 - 10]. New strategies, such as targeted therapy and use of molecular paths in order to modify the pathophysiology, have been suggested [11].

The 1-year mortality rate due to HF-pEF is about 20-30% in different studies [4, 12 - 14]. Several factors, such as anemia, diabetes mellitus, chronic kidney disease, or a large number of admissions, have been linked with a worse prognosis [4].

The aim of this study was to describe the clinical characteristics of patients with HF-pEF and to identify the factors associated with mortality and readmission in 5 years of follow up.

2. MATERIALS AND METHODS

An observational study was conducted in a cohort of 338 patients who were followed in the Heart Failure Unit of the Department of Internal Medicine of the Santiago de Compostela University Teaching Hospital (Complejo Hospitalario Universitario de Santiago) (NW Spain). Patients were referred to this Unit from the cardiology, emergency, and internal medicine departments and primary health care. The patients were recruited from 1 January 2007 to 31 December 2011 [15].

After recruitment, it was found that all the patients were at least 50 years old. The diagnostic criteria used to include the patients were those published in the current guidelines [16, 17].

The patient information such as socio-demographic, clinical and analytical characteristics, along with the received treatment, were recorded, and then were followed for up to 5 years after the first consultation with a median follow-up of 4.73 (interquartile range [IQR]: 1.84-7.13) years. For this study, the patients that presented with HF-pEF (total cohort = 209 patients) were selected.

Left ventricular ejection fraction (LVEF) was measured using the Teichholz formula [18]. As preserved ejection fraction, a LVEF \geq 50%, was considered and as reduced ejection fraction, a LVEF $<$ 50%, was considered [16].

N Terminal pro-B-type natriuretic peptide (NT-proBNP) was measured with a commercial immunoassay (Cobas Elecsys e411, Roche), which employs two polyclonal antibodies directed at residues 1-21 and 39-50 of the NT-proBNP molecule.

Hypertension was defined as a blood pressure \geq 140/90 mmHg or patients treated with antihypertensive treatment. Chronic kidney disease (CKD) was defined as a glomerular filtration rate $<$ 60 ml/min/1.73m² using the 4-variable Modification of Diet in Renal Disease formula [19]. We considered as anemia a hemoglobin level $<$ 12 g/dl, iron deficiency as ferritin $<$ 12 ng/ml, vitamin B12 deficiency when vitamin B12 level was $<$ 200 pg/ml, folate deficiency when folate level was $<$ 5ng/ml and hypercholesterolemia when low density lipoprotein cholesterol (LDL-C) level was $>$ 130 mg/dl. Diabetes was defined as an abnormal glucose metabolism (hemoglobin A_{1c} \geq 6.5%, fasting plasma glucose \geq 126 mg/dl,

random venous plasma glucose \geq 200 mg/dl in a patient with classic symptoms of hyperglycemia or plasma glucose \geq 200 mg/dl measured 2h after a glucose load of 1.75 g/kg (maximum dose of 75 g) in an oral glucose tolerance test). Those patients who smoked tobacco regularly were considered as smokers and alcohol abusers were the patients who consumed $>$ 80 g alcohol/day.

HF etiology was classified as: ischemic, when the patient was diagnosed with ischemic Heart Disease (IHD); valvular, when the patient had at least a moderate valvulopathy without IHD; cor pulmonale, when there was a right heart failure without left ventricular dysfunction; and hypertensive, when the patient had hypertension without another cause of HF.

The study protocol was reviewed and approved by the Galician Clinical Research Ethics Committee (Reference number 2012/086) and conformed to the Helsinki Declaration. All data analyzed were anonymized.

2.1. Statistical Analysis

A descriptive analysis was performed by calculating qualitative variable rates plus mean and standard deviation. Either the Chi-squared test or Fisher's exact test (when the expected frequency value is $<$ 5) was used to compare qualitative variables and Student's t test was used for quantitative variables. Kaplan-Meier curves were used to evaluate the factors related to mortality and readmission and a multivariate analysis was performed using a Cox-regression. A two-sided $p<$ 0.05 was regarded as significant. All analyses were performed using the SPSS v. 22.0 software package (SPSS Inc., Chicago, IL, USA).

3. RESULTS

During the period of study (up to 5 years), a total of 209 patients with HF-pEF, out of which, 59.3% were women, with a mean age of 79.0 years (standard deviation=7.2) were followed.

The main comorbid conditions were CKD (93.3%), hypertension (82.8%), atrial fibrillation (56.9%), and hypercholesterolemia (49.3%).

The most frequent etiology was hypertensive heart disease (64.1%), followed by ischemic disease (11.5%) and valvular disease (10.0%).

When the study started, the median of hemoglobin was 12.6 g/dl (IQR: 11.1-13.9), the median of the glomerular filtrate was 54.7 ml/min/1.73m² (IQR: 40.0-67.3) and the median of NT-proBNP levels was 1368 pg/ml (IQR: 488-3302). The median of systolic blood pressure was 140 mmHg (IQR: 120-150) and the median of diastolic blood pressure was 75 mmHg (IQR: 65-80).

The most commonly used treatments were loop diuretics (90.9%) (median dose of furosemide:40 mg, IQR: 20-60 mg), statins (64.1%), and angiotensin receptor blockers (ARBs) (59.8%). Angiotensin-Converting Enzyme (ACE) inhibitors were used in 53.6% of the patients, less than beta-blockers (54.1%), and antiplatelet drugs (54.1%), as can be seen in Table 1.

Table 1. Clinical characteristics of the patients.

Characteristic	Result
Age (year, mean \pm SD)	79.0 \pm 7.2
Age \geq 70 years, n (%)	186 (89.0)
Gender, n (%)	85 (40.7)
Male	124 (59.3)
Female	
Comorbid conditions, n (%)	195 (93.3)
CKD	173 (82.8)
Hypertension	119 (56.9)
Atrial fibrillation	103 (49.3)
Hypercholesterolemia	83 (39.7)
Anemia	10 (4.8)
Iron deficiency	17 (8.1)
Folate deficiency	4 (1.9)
Vitamin B12 deficiency	74 (35.4)
Diabetes mellitus	61 (29.2)
COPD	43 (20.6)
Smoking	23 (11.0)
Alcohol abusers	
Etiology, n (%)	134 (64.1)
Hypertensive	24 (11.5)
Ischemic	21 (10.0)
Valvular	16 (7.7)
Cor pulmonale	14 (6.7)
Others	
NYHA class, n (%)	58 (27.8)
I	86 (41.1)
II	61 (29.2)
III	2 (1.0)
IV	
Treatment, n (%)	190 (90.9)
Loop diuretics	134 (64.1)
Statins	97 (72.4)
Atorvastatin	15 (11.2)
Pravastatin	7 (5.2)
Simvastatin	2 (1.5)
Rosuvastatin	13 (9.7)
Others	125 (59.8)
ARBs	113 (54.1)
Beta-blockers	72 (63.7)
Nebivolol	21 (18.6)
Carvedilol	12 (10.6)
Bisoprolol	5 (4.4)
Atenolol	3 (2.6)
Others	113 (54.1)
Antiplatelet drugs	112 (53.6)
ACE inhibitors	98 (46.9)
Spironolactone	94 (45.0)
Anticoagulants	81 (38.8)
Calcium antagonists	73 (34.9)
Nitroglycerin	71 (34.0)
Digoxin	56 (26.8)
Thiazide diuretics	
Admissions, n (%)	95 (45.5)
1	49 (23.5)
2	21 (10.0)
3	9 (4.3)
More than 3	28 (10.2)
Five-year mortality, n (%)	116 (55.5)

(Table 1) cont....

Cause of mortality, n (%)	33 (28.4)
Cardiovascular disease	13 (11.2)
Infection disease	5 (4.3)
Cancer	1 (0.9)
Respiratory disease	1 (0.9)
Renal failure	63 (54.3)
Unknown	

ACE: angiotensin-converting enzyme; ARBs: angiotensin receptor blockers; COPD: chronic obstructive pulmonary disease; CKD: Chronic kidney disease; NYHA: New York Heart Association

Table 2. Univariate analysis. Factor associated with 5-year mortality and readmission rates.

Variable	Five-year mortality			More than 2 admission in 5-year follow-up		
	n(%) who died (116)	n (%) survivors(93)	p	n(%) readmitted (49)	n (%) not readmitted (160)	p
Male sex	53 (45.7%)	32 (34.4%)	NS	22 (44.9%)	63 (39.4%)	NS
Comorbid condition	-	-	-	-	-	-
CKD	111 (95.7%)	84 (92.3%)	NS	47 (95.5%)	148 (93.7%)	NS
Hypertension	100 (86.2)	73 (78.5%)	NS	38 (77.6%)	135 (84.4%)	NS
Atrial fibrillation	71 (61.2%)	48 (51.6%)	NS	37 (75.5%)	82 (51.3%)	0.03
Hypercholesterolemia	23 (27.1%)	28 (37.3%)	NS	12 (31.6%)	39 (32.0%)	NS
Anemia	56 (48.3%)	27 (29.0%)	<0.01	26 (53.1%)	57 (35.6%)	0.03
Iron deficiency	5 (4.3%)	5 (5.4%)	NS	1 (2.0%)	9 (5.6%)	NS
Folate deficiency	9 (7.8%)	8 (8.6%)	NS	3 (6.1%)	14 (8.8%)	NS
VitaminB12 deficiency	0 (0.0%)	4 (4.3%)	0.04	1 (2.0%)	3 (1.9%)	NS
Diabetes mellitus	35 (30.2%)	39 (41.9%)	NS	23 (46.9%)	51 (31.9%)	0.06
COPD	39 (33.6%)	22 (23.7%)	NS	15 (30.6%)	46 (28.8%)	NS
Smoking	27 (23.5%)	16 (18.2%)	NS	9 (19.1%)	34 (21.8%)	NS
Alcohol abusers	13 (11.5%)	10 (11.4%)	NS	7 (14.9%)	16 (10.4%)	NS
Cause						
Hypertensive	72 (62.1%)	62 (66.7%)	NS	28 (57.1%)	106 (66.3%)	NS
Ischaemic	14 (12.1%)	10 (10.8%)	NS	6 (12.2%)	118 (11.3%)	NS
Valvular	15 (12.9%)	6 (6.5%)	NS	6 (12.2%)	10 (6.3%)	NS
Cor pulmonale	9 (7.8%)	7 (7.5%)	NS	7 (14.3%)	14 (8.8%)	NS
Treatment						
Loop diuretics	100 (90.1%)	90 (96.8)	0.06	47 (97.9%)	143 (91.7%)	NS
Statins	66 (56.9%)	68 (73.1%)	0.01	31 (63.3%)	103 (64.4%)	NS
ARBs	65 (58.0%)	60 (64.5%)	NS	32 (66.7%)	93 (59.3%)	NS
Beta-blockers	58 (51.8%)	55 (59.1%)	NS	25 (52.1%)	88 (56.1%)	NS
Antiplatelet drugs	58 (50.0%)	55 (59.1%)	NS	21 (42.9%)	92 (57.5%)	NS
ACE inhibitors	58 (52.7%)	54 (58.1%)	NS	24 (52.2%)	88 (61.1%)	NS
Spironolactone	62 (55.4%)	36 (38.7%)	0.02	30 (62.5%)	68 (43.3%)	0.02
Anticoagulants	52 (44.8%)	42 (45.2%)	NS	31 (63.3%)	63 (39.4%)	0.01
Calcium-channel blockers	42 (37.5%)	39 (41.9%)	NS	26 (54.2%)	55 (35.0%)	0.02
Nitroglycerin	48 (42.9%)	25 (26.9%)	0.02	25 (52.1%)	48 (30.6%)	<0.01
Thiazide diuretics	30 (26.8%)	26 (28.0%)	NS	15 (31.3%)	41 (26.1%)	NS
Digoxin	41 (35.3%)	30 (32.3%)	NS	25 (51.0%)	46 (28.8%)	0.01
Amiodarone	15 (12.9%)	6 (6.5%)	NS	5 (10.2%)	16 (10.0%)	NS
More than 2 admissions	-35 (30.2%)	-14 (15.1%)	0.01	-	-	-

ACE: angiotensin-converting enzyme; ARBs: angiotensin receptor blockers; COPD: chronic obstructive pulmonary disease; CKD: chronic kidney disease

Other clinical characteristics are shown in Table 1.

The 5-year mortality rate was 55.5% (116 patients) and 24.5% (58) of the patients that had >2 admissions during 5 years. The main cause of mortality was cardiovascular disease (29.1%).

The main factors derived by the univariate analysis ($p < 0.05$) associated with 5-year mortality and having had >2 admissions are shown in Table 2.

The Kaplan-Meier curves for mortality (Fig. 1) show that the factors related were anemia, previous admissions, as well as treatment with spironolactone, statins, nitroglycerin, or loop diuretics.

The Kaplan-Meier curves for >2 admissions (Fig. 2) show that the related factors were atrial fibrillation, anemia, being treated with spironolactone, calcium channel-blockers, nitroglycerin, digoxin, and anticoagulants.

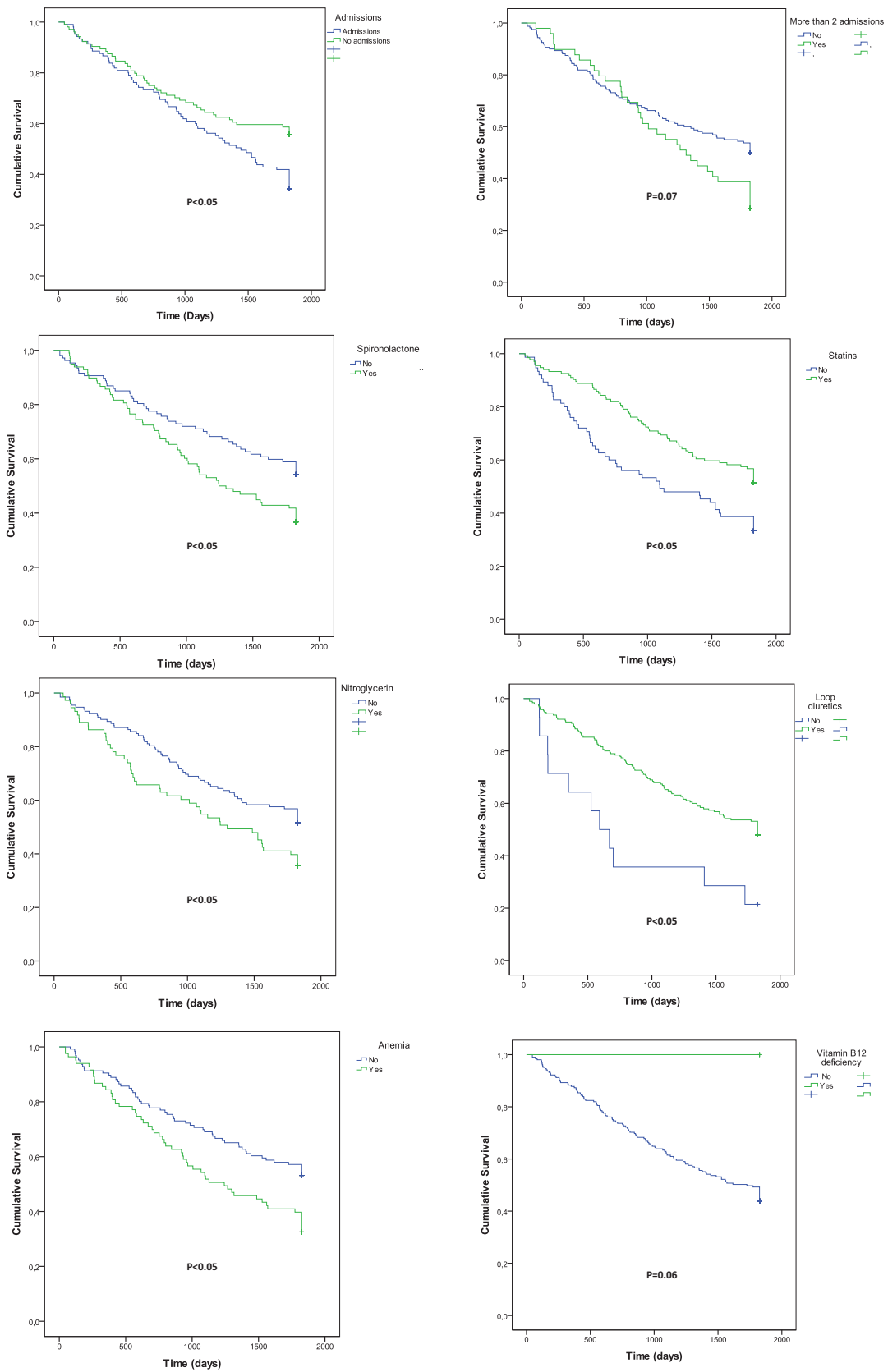


Fig. (1). We represented The Kaplan-Meier curves for mortality. We observed that anemia, previous admissions, treatment with spironolactone, statins, nitroglycerin and loop diuretics were related with more mortality.

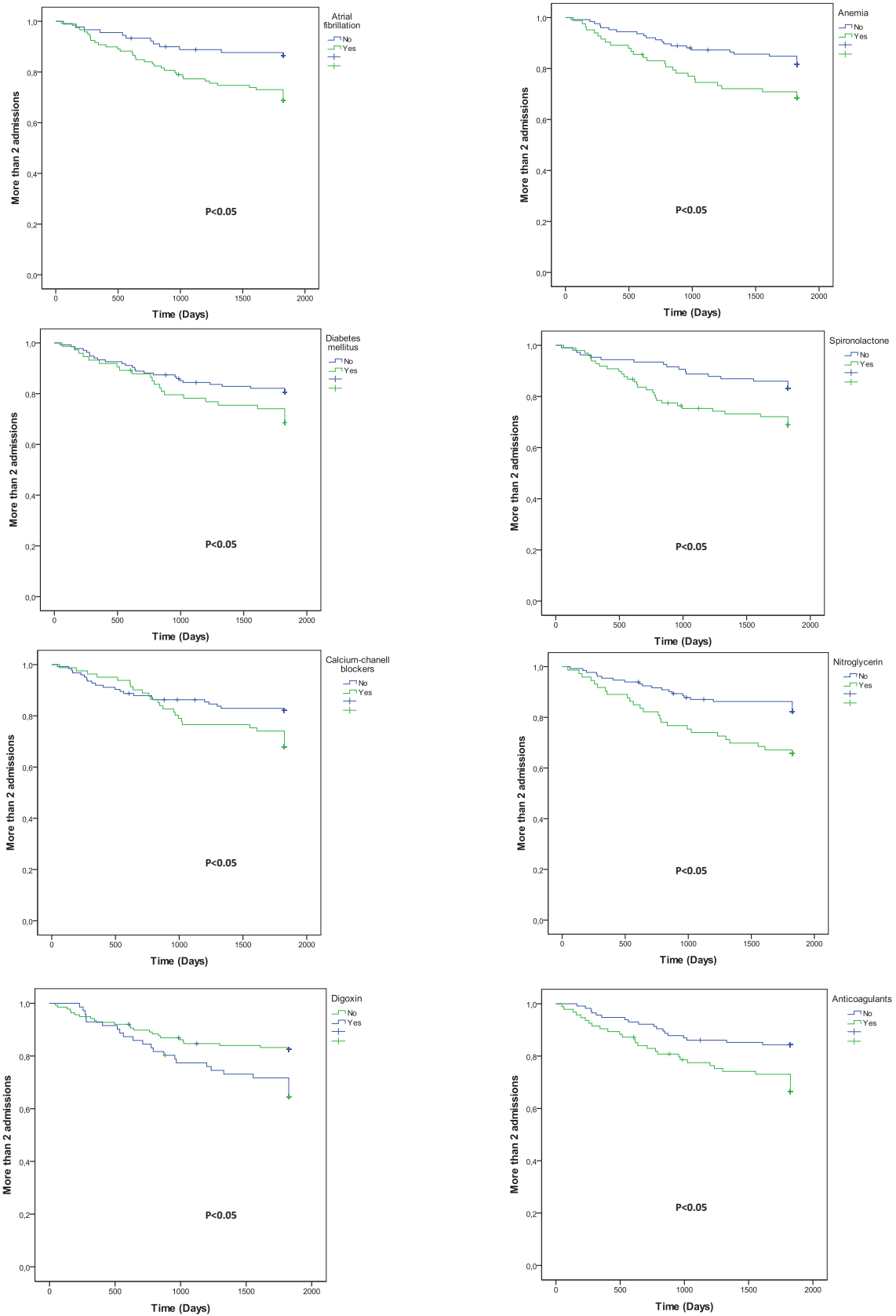


Fig. (2). We represented the Kaplan-Meier curves for >2 admissions. We observed that atrial fibrillation, anemia, being treated with spironolactone, calcium channel-blockers, nitroglycerin, digoxin and anticoagulants were related to having >2 admissions.

After a multivariate analysis, the variables associated with 5-year mortality were anemia (Hazard Ratio [HR]=1.7; 95% confidence interval [CI]: 1.2-2.5), being treated with statins (HR= 0.7; 95%CI 0.5-0.9) and spironolactone (HR=1.6; 95%CI: 1.1-2.3).

Nevertheless, the variables associated with having >2 admissions were atrial fibrillation (HR=2.7; 95%CI: 1.4-5.5), anemia (HR=1.9; 95%CI: 1.0-3.3), and being treated with spironolactone (HR=2.1; 95% CI: 1.2-3.7).

Patients treated with ARBs, ACE inhibitors, or beta-blockers showed no significant differences in mortality and readmission.

4. DISCUSSION

HF with preserved systolic function is a common disease that usually affects old patients and is associated with increased mortality and deterioration of well-being. Nowadays, no pharmacologic treatment has proven to result in a significant reduction in mortality and most of the treatments focus on addressing comorbidity to improve the well-being of the patient.

The patients with HF-pEF had a high 5-year mortality and readmission rate. To our knowledge, the majority of previous studies only evaluated 1-year outcomes [13, 14]; just 1 study had evaluated 5-year mortality and observed the rate of mortality >20% [4]. This reaffirms the importance of this disease and the need for efforts to improve outcomes.

Similar to previous studies, a high level of comorbidity, especially of CKD and hypertension [5, 13] was observed. Furthermore, like in other studies [4, 14], it was found that some comorbidities, like anemia, are correlated with greater mortality and readmission and some others, like atrial fibrillation, with more readmissions.

These clinical characteristics highlight the necessity to change the treatment in some cases. On the one hand, some comorbidities limit the response of treatment currently used in HF. For example, CKD reduces the response of diuretic treatments and restricts the use of drugs like ARBs, ACE inhibitors, or aldosterone antagonists.

On the other hand, as recommended by European Guidelines, a correct diagnosis and treatment of all comorbidities are needed to improve the symptoms and well-being and to reduce mortality and readmission rates [16].

As previous studies have found [7 - 9, 20 - 22], no change either in mortality and readmission rates was observed in patients treated with ARBs, ACE inhibitors, beta-blockers, or nitrates. Furthermore, more mortality and readmissions in patients treated with spironolactone were observed. Nevertheless, there are studies that have found some benefits with ACE inhibitors, ARBs, beta-blockers or aldosterone antagonists. In this context, the Charm-Preserved Trial [8] reported that the Candesartan reduced the admission rate for patients with HF-pEF and in the Perindopril Trial (PEP-CHF) [7], an improvement was found in symptoms and exercise capacity. Besides, the Study of Effects of Nebivolol Intervention on Outcomes and Rehospitalization in Seniors

with heart failure (SENIORS) study [23, 24] found that the patients treated with nebivolol presented less mortality and readmission rates. Because of these reasons, the use of ARBs, ACE inhibitors and beta-blockers, especially to control hypertension, is considered reasonable in the present guidelines [17].

The spironolactone trials found contradictory results with regards to the improvement of symptoms. The Treatment of Preserved Cardiac Function Heart Failure With an Aldosterone Antagonist (TOPCAT) trial [25], which included 3445 patients with a median age of 68.7 years randomized to receive spironolactone or placebo with a mean follow-up of 3.3 years, found an improvement in the quality of life. On the other hand, the Aldosterone Receptor Blockade in Diastolic Heart Failure (Aldo-DHF) Trial [26], which included 422 patients with a median age of 67.0 years randomized to receive spironolactone or placebo with a mean follow-up was 11.6 months, did not find an improvement of the symptoms in these patients. The worst results in mortality and readmission with spironolactone can be explained because of a greater prevalence of CKD in the patients compared with the above mentioned studies [25, 26]. Nevertheless, since there is no clear evidence regarding the use of this treatment in HF-pEF, possibly we should consider avoiding aldosterone antagonists in these patients, especially if they present comorbidities, such as CKD.

To our knowledge, only 1 study evaluated the use of nitrates in HF-pEF [27] and did not find any change in symptoms with this treatment, and therefore, its use is not currently recommended [17].

Only the use of statin was associated with less mortality. To our knowledge, there are no previous studies that analyzed these treatments. Statins have previously been studied in HF with reduced ejection fraction and changes in outcomes have not been observed [28, 29]. Nevertheless, it is necessary to conduct more investigations to evaluate the outcomes in HF-pEF.

Calcium-channel blockers are not recommended to treat patients with HF with reduced ejection fraction [30, 31] and possibly they should also be avoided in HF-pEF, until future studies prove their safety.

The main limitations of the present study are its observational design and that it was conducted in a single center with a limited number of patients. However, the results are similar to those obtained by others. Moreover, not only patients admitted to the hospital but also ambulatory patients referred from primary health care were included. This provides a better vision of the general problem [4, 13, 14]. Furthermore, the study includes only patients followed by the Department of Internal Medicine, excluding the patients followed by the Cardiology Department. Probably because of this, the patients are older and with more comorbidity than in other studies [13, 14].

CONCLUSION

The HF-pEF is a common disease that usually affects old patients with a high number of comorbidities, inducing high mortality, high readmission rates, and deterioration of well-

being.

The only factor associated with lower mortality was treatment with statins. On the other hand, spironolactone was associated with higher mortality and readmission rates.

It is necessary to continue studying this area to identify which factors can be modified in order to improve outcomes and well-being of the patients.

LIST OF ABBREVIATIONS

ACE	= Angiotensin-Converting Enzyme;
Aldo-DHF	= Aldosterone Receptor Blockade in Diastolic Heart Failure;
ARBs	= Angiotensin receptor blockers;
CI	= Confidence Interval;
CKD	= Chronic kidney disease;
COPD	= Chronic Obstructive Pulmonary Disease;
HF	= Heart Failure;
HF-pEF	= Heart failure with Preserved Ejection Fraction; HR: Hazard ratio;
IHD	= Ischemic Heart Disease; IQR: interquartile range;
LVEF	= Left Ventricular Ejection Fraction;
NP-proBNP	= N Terminal pro-B-type natriuretic peptide;
NYHA	= New York Heart Association;
PEP-CHF	= Perindopril Trial;
SENIORS	= Study of Effects of Nebivolol Intervention on Outcomes and Rehospitalization in Seniors With Heart Failure;
TOPCAT	= Treatment of Preserved Cardiac Function Heart Failure With an Aldosterone Antagonist

ETHICS APPROVAL AND CONSENT TO PARTICIPATE

The study protocol was reviewed and approved by the Galician Clinical Research Ethics, Committee, Spain (reference number 2012/086)

HUMAN AND ANIMAL RIGHTS

No animals were used in this research. All human research procedures were followed in accordance with the ethical standards of the committee responsible for human experimentation (institutional and national), and with the Helsinki Declaration of 1975, as revised in 2013.

CONSENT FOR PUBLICATION

Informed consent was obtained from all participants.

AVAILABILITY OF DATA AND MATERIAL

The data sets analyzed during the current study are available from the corresponding author [CM] upon request.

FUNDING

None.

CONFLICT OF INTEREST

The authors declare no conflict of interest, financial or otherwise.

ACKNOWLEDGEMENTS

Declared none.

REFERENCES

- [1] Sanderson JE. Heart failure with a normal ejection fraction. *Heart* 2007; 93(2): 155-8. [http://dx.doi.org/10.1136/hrt.2005.074187] [PMID: 16387829]
- [2] McCullough PA, Philbin EF, Spertus JA, Kaatz S, Sandberg KR, Weaver WD. Confirmation of a heart failure epidemic: findings from the Resource Utilization Among Congestive Heart Failure (REACH) study. *J Am Coll Cardiol* 2002; 39(1): 60-9. [http://dx.doi.org/10.1016/S0735-1097(01)01700-4] [PMID: 11755288]
- [3] Sayago-Silva I, García-López F, Segovia-Cubero J. Epidemiology of heart failure in Spain over the last 20 years. *Rev Esp Cardiol (Engl Ed)* 2013; 66(8): 649-56. [http://dx.doi.org/10.1016/j.rec.2013.03.012] [PMID: 24776334]
- [4] Owan TE, Hodge DO, Herges RM, Jacobsen SJ, Roger VL, Redfield MM. Trends in prevalence and outcome of heart failure with preserved ejection fraction. *N Engl J Med* 2006; 355(3): 251-9. [http://dx.doi.org/10.1056/NEJMoa052256] [PMID: 16855265]
- [5] The survival of patients with heart failure with preserved or reduced left ventricular ejection fraction: an individual patient data meta-analysis. *Eur Heart J* 2012; 33(14): 1750-7. [http://dx.doi.org/10.1093/eurheartj/ehr254] [PMID: 21821849]
- [6] Tschöpe C, Van Linthout S, Kherad B. Heart failure with preserved ejection fraction and future pharmacological strategies: A glance in the crystal ball. *Curr Cardiol Rep* 2017; 19(8): 70. [http://dx.doi.org/10.1007/s11886-017-0874-6] [PMID: 28656481]
- [7] Cleland JGF, Tendera M, Adams J, Freemantle N, Polonski L, Taylor J. The perindopril in elderly people with chronic heart failure (PEP-CHF) study. *Eur Heart J* 2006; 27(19): 2338-45. [http://dx.doi.org/10.1093/eurheartj/ehl250] [PMID: 16963472]
- [8] Yusuf S, Pfeffer MA, Swedberg K, *et al.* Effects of candesartan in patients with chronic heart failure and preserved left-ventricular ejection fraction: the CHARM-Preserved Trial. *Lancet* 2003; 362(9386): 777-81. [http://dx.doi.org/10.1016/S0140-6736(03)14285-7] [PMID: 13678871]
- [9] Massie BM, Carson PE, McMurray JJ, *et al.* Irbesartan in patients with heart failure and preserved ejection fraction. *N Engl J Med* 2008; 359(23): 2456-67. [http://dx.doi.org/10.1056/NEJMoa0805450] [PMID: 19001508]
- [10] Lund LH, Benson L, Dahlström U, *et al.* Association between use of renin-angiotensin system antagonists and mortality in patients with heart failure and preserved ejection fraction. *JAMA* 2012; 308(20): 2108. [http://dx.doi.org/10.1001/jama.2012.14785]
- [11] Senni M, Paulus WJ, Gavazzi A, *et al.* New strategies for heart failure with preserved ejection fraction: the importance of targeted therapies for heart failure phenotypes. *Eur Heart J* 2014; 35(40): 2797-815. [http://dx.doi.org/10.1093/eurheartj/ehu204] [PMID: 25104786]
- [12] Escobar A, García-Pérez L, Navarro G, Bilbao A, Quiros R. A one-year mortality clinical prediction rule for patients with heart failure. *Eur J Intern Med* 2017; 44: 49-54. [http://dx.doi.org/10.1016/j.ejim.2017.06.013] [PMID: 28637595]
- [13] Senni M, Gavazzi A, Oliva F, *et al.* In-hospital and 1-year outcomes of acute heart failure patients according to presentation (de novo vs. worsening) and ejection fraction. Results from IN-HF Outcome Registry. *Int J Cardiol* 2014; 173(2): 163-9. [http://dx.doi.org/10.1016/j.ijcard.2014.02.018] [PMID: 24630337]
- [14] Bhatia RS, Tu JV, Lee DS, *et al.* Outcome of heart failure with preserved ejection fraction in a population-based study. *N Engl J Med* 2006; 355(3): 260-9. [http://dx.doi.org/10.1056/NEJMoa051530] [PMID: 16855266]
- [15] Martínez-Braña L, Mateo-Mosquera L, Bermúdez-Ramos M, *et al.* Clinical characteristics and prognosis of heart failure in elderly patients. *Rev Port Cardiol* 2015; 34(7-8): 457-63. [http://dx.doi.org/10.1016/j.repc.2015.02.002] [PMID: 26162285]

- [16] Ponikowski P, Voors AA, Anker SD, *et al.* 2016 ESC guidelines for the diagnosis and treatment of acute and chronic heart failure: The Task Force for the diagnosis and treatment of acute and chronic heart failure of the European Society of Cardiology (ESC) Developed with the special contribution of the Heart Failure Association (HFA) of the ESC. *Eur Heart J* 2016; 37(27): 2129-200. [http://dx.doi.org/10.1093/eurheartj/ehw128] [PMID: 27206819]
- [17] Yancy CW, Jessup M, Bozkurt B, *et al.* 2017 ACC/AHA/HFSA focused update of the 2013 accf/aha guideline for the management of heart failure: A report of the american college of cardiology/american heart association task force on clinical practice guidelines and the heart failure society of america. *Circulation* 2017; 136(6): e137-61. [http://dx.doi.org/10.1161/CIR.0000000000000509] [PMID: 28455343]
- [18] Teichholz LE, Kreulen T, Herman MV, Gorlin R. Problems in echocardiographic volume determinations: echocardiographic-angiographic correlations in the presence of absence of asynergy. *Am J Cardiol* 1976; 37(1): 7-11. [http://dx.doi.org/10.1016/0002-9149(76)90491-4] [PMID: 1244736]
- [19] Horio M. Nomogram for the 4-variable modification of diet in renal disease study equation. *Am J Kidney Dis* 2007; 49(5): 722-3. [http://dx.doi.org/10.1053/j.ajkd.2007.02.279] [PMID: 17472858]
- [20] Pitt B, Pfeffer MA, Assmann SF, *et al.* Spironolactone for heart failure with preserved ejection fraction. *N Engl J Med* 2014; 370(15): 1383-92. [http://dx.doi.org/10.1056/NEJMoa1313731] [PMID: 24716680]
- [21] Patel K, Fonarow GC, Kitzman DW, *et al.* Aldosterone antagonists and outcomes in real-world older patients with heart failure and preserved ejection fraction. *JACC Heart Fail* 2013; 1(1): 40-7. [http://dx.doi.org/10.1016/j.jchf.2012.08.001] [PMID: 23814702]
- [22] Ahmed A, Rich MW, Fleg JL, *et al.* Effects of digoxin on morbidity and mortality in diastolic heart failure: the ancillary digitalis investigation group trial. *Circulation* 2006; 114(5): 397-403. [http://dx.doi.org/10.1161/CIRCULATIONAHA.106.628347] [PMID: 16864724]
- [23] Mulder BA, van Veldhuisen DJ, Crijns HJGM, *et al.* Effect of nebivolol on outcome in elderly patients with heart failure and atrial fibrillation: insights from SENIORS. *Eur J Heart Fail* 2012; 14(10): 1171-8. [http://dx.doi.org/10.1093/eurjhf/hfs100] [PMID: 22764183]
- [24] van Veldhuisen DJ, Cohen-Solal A, Böhm M, *et al.* Beta-blockade with nebivolol in elderly heart failure patients with impaired and preserved left ventricular ejection fraction: Data From SENIORS (Study of Effects of Nebivolol Intervention on Outcomes and Rehospitalization in Seniors With Heart Failure). *J Am Coll Cardiol* 2009; 53(23): 2150-8. [http://dx.doi.org/10.1016/j.jacc.2009.02.046] [PMID: 19497441]
- [25] Lewis EF, Kim H-Y, Claggett B, *et al.* Impact of spironolactone on longitudinal changes in health-related quality of life in the treatment of preserved cardiac function heart failure with an aldosterone antagonist trial. *Circ Heart Fail* 2016; 9(3):e001937 [http://dx.doi.org/10.1161/CIRCHEARTFAILURE.114.001937] [PMID: 26962133]
- [26] Edelmann F, Wachter R, Schmidt AG, *et al.* Effect of spironolactone on diastolic function and exercise capacity in patients with heart failure with preserved ejection fraction: the Aldo-DHF randomized controlled trial. *JAMA* 2013; 309(8): 781-91. [http://dx.doi.org/10.1001/jama.2013.905]
- [27] Zakeri R, Levine JA, Koepf GA, *et al.* Nitrate's effect on activity tolerance in heart failure with preserved ejection fraction trial: rationale and design. *Circ Heart Fail* 2015; 8(1): 221-8. [http://dx.doi.org/10.1161/CIRCHEARTFAILURE.114.001598] [PMID: 25605640]
- [28] Tavazzi L, Maggioni AP, Marchioli R, *et al.* Effect of rosuvastatin in patients with chronic heart failure (the GISSI-HF trial): a randomised, double-blind, placebo-controlled trial. *Lancet* 2008; 372(9645): 1231-9. [http://dx.doi.org/10.1016/S0140-6736(08)61240-4] [PMID: 18757089]
- [29] Kjekshus J, Apetrei E, Barrios V, *et al.* Rosuvastatin in older patients with systolic heart failure. *N Engl J Med* 2007; 357(22): 2248-61. [http://dx.doi.org/10.1056/NEJMoa0706201] [PMID: 17984166]
- [30] Goldstein RE, Boccuzzi SJ, Cruess D, Nattel S. Diltiazem increases late-onset congestive heart failure in postinfarction patients with early reduction in ejection fraction. The Adverse Experience Committee; and the Multicenter Diltiazem Postinfarction Research Group. *Circulation* 1991; 83(1): 52-60. [http://dx.doi.org/10.1161/01.CIR.83.1.52] [PMID: 1984898]
- [31] Packer M, O'Connor CM, Ghali JK, *et al.* Effect of amlodipine on morbidity and mortality in severe chronic heart failure. *N Engl J Med* 1996; 335(15): 1107-14. [http://dx.doi.org/10.1056/NEJM199610103351504] [PMID: 8813041]